

Featherston
SAS Workshop
December 9th-13th, 2024

Creating Texture in Oil Paint — Paint Along

Hello Everyone!

Thank you so much for being a part of my workshop at the Scottsdale Artists School this December — I'm looking forward to meeting all of you painting together at this amazing school. It's going to be here before you know it, so here's a few things to share.

I'm offering a paint along option for the workshop - a high resolution digital image of a set up I've composed to showcase some of the skills and techniques I plan to cover. You can work from a screen or print a photo, and I'll give you palette list of the colors you'll need.

So, why would you want to do this?

In a workshop setting it can be tough to know what to bring as a painting model. Add in all the size options for a substrate to paint on, packing your painting set up, deciding what paints to bring — it can be overwhelming, especially if you're traveling or new to painting in oils.

The paint along simplifies things and you get started painting right away. It takes composition and drawing out of the equation and lets you work from my edited photo reference of a simple piece designed to build specific skills in painting texture.

Since we only have five days together - and I want you to get the most information on painting possible from my workshop - doing a paint along from reference lets you focus on painting and paint handling with immediate engagement.

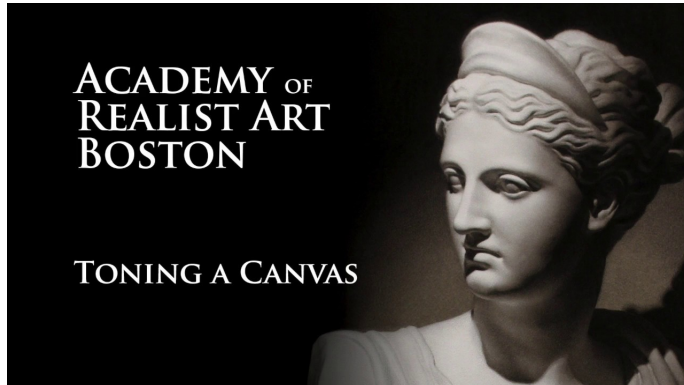
In this composition you'll find the following challenges: hard and soft plane changes, cast shadows, textures such as wood, shiny metal, satin and glass, perspective and spectral highlights. I'll do step by step demos showing each stage of the painting, sharing the colors, brushes, tools and techniques I use in my own practice.

That said, I always encourage you to bring compositions that inspire you, to work from life and make your own drawing for a more holistic approach. Please bring whatever texture challenges you want to tackle! The paint along is only offered as an option, and I welcome all compositions. Everyone will get my full attention regardless of what they choose to paint.

Please see the attached file for the paint along image/jpeg. You're welcome to work from a screen or print out a photo yourself. I can also print out a copy for you, which I'll try to color correct as close to the image as I can. If you want me to print out copy for you, please let me know so I'll be sure to have enough copies. Email me nfeatherston@msn.com or text 609-865-2868 or send me a DM on Insta @nfeatherston_fine_art

Paint Along Panel and Palette:

You'll need an 8x10 panel; the reference will print at 8x10 inches. I like a toned panel to paint on, and here's an awesome video of Julie Beck showing you how she makes a toned wash for a white panel if you want to try it out:



The colors I would choose for this painting are as follows:

- WN Ivory Black
- Gamblin Titanium White
- WN Pthalo Blue or Pthalo Turquoise
- WN Burnt Umber
- WN Burnt Sienna
- WN Cadmium Red
- Blockx Cadmium Red Orange
- WN Dioxazine Purple
- Gamblin Permanent Alizarin
- Gambin Cadmium Orange or Grumbacher Cadmium Orange Medium
- WN Cadmium Yellow Pale

I wouldn't go out and buy all of these, but this is a pretty basic oil painting kit. But in the interest of transparency, this is what I'd have out on my palette and the brands I like for each hue.

